



ELEVATION C

### ABOUT THE NASSEE

As you step into the two-story Nassee plan, you'll find an entry with a convenient powder room and coat closet on one side and an open entertaining area on the other. There, the kitchen offers a built-in pantry and ample cabinets and countertops, as well as a broad center island that can be extended for even more prep space and seating. The rest of the main floor is devoted to a welcoming great room with access to under-stair storage. Two secondary bedrooms are located upstairs, each with a walk-in closet. Nearby are a hall bath and a laundry room with optional cabinets and sink. The owner's suite boasts a roomy walk-in closet and an attached bath with two vanities, a walk-in shower and a linen closet.

### COMMUNITY LOCATION:

Redmond at Valencia | 27105 White Sage Court | Valencia, CA 91381 | **661.705.6092**

### DESIGN CENTER LOCATION:

Southern California Home Gallery™ | 5171 California Avenue, Suite 110 | Irvine, CA 92617 | **800.852.9714**

\*This information is presented for educational purposes only. The HERS® index for a confirmed rating will be determined by a third-party HERS rater based on data gathered from on-site observations and, if required, testing of rated features for a home as featured, optioned, located, oriented and/or built.

\*\*Standard new home is based on the RESNET® Reference Home definition with a HERS index of 100 (based on the 2006 International Energy Conservation Code).

\*\*\*Typical resale home is based on the U.S. Department of Energy definition with a HERS index of 130.

^RESNET has developed the HERS index to indicate the comparative efficiencies of homes. It is no guarantee that energy efficiencies will be achieved.

Floor plans and renderings are conceptual drawings and may vary from actual plans and homes as built. Options and features may not be available on all homes and are subject to change without notice. Actual homes may vary from photos and/or drawings which show upgraded landscaping and may not represent the lowest-priced homes in the community. Features may include optional upgrades and may not be available on all homes. Prices, specifications and availability are subject to change without notice. Square footage is approximate and subject to change without notice. ©2021 Richmond American Homes, Richmond American Homes of Maryland, Inc., California Department of Real Estate – Real Estate Broker, Corporation License Number 01842595. 12/08/2021



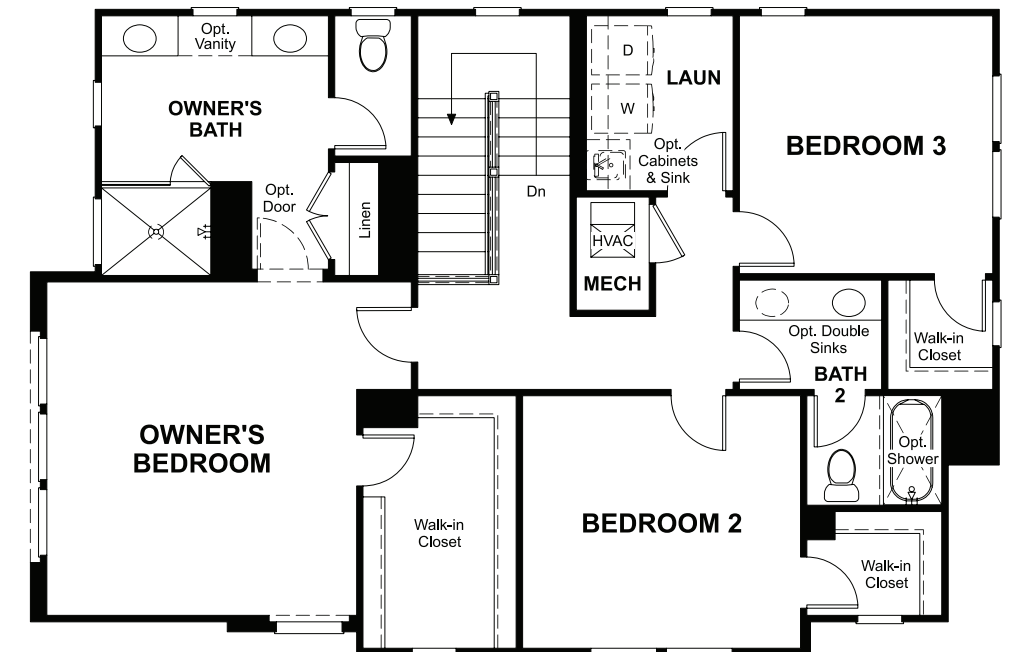
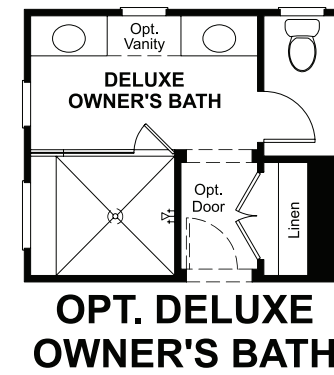
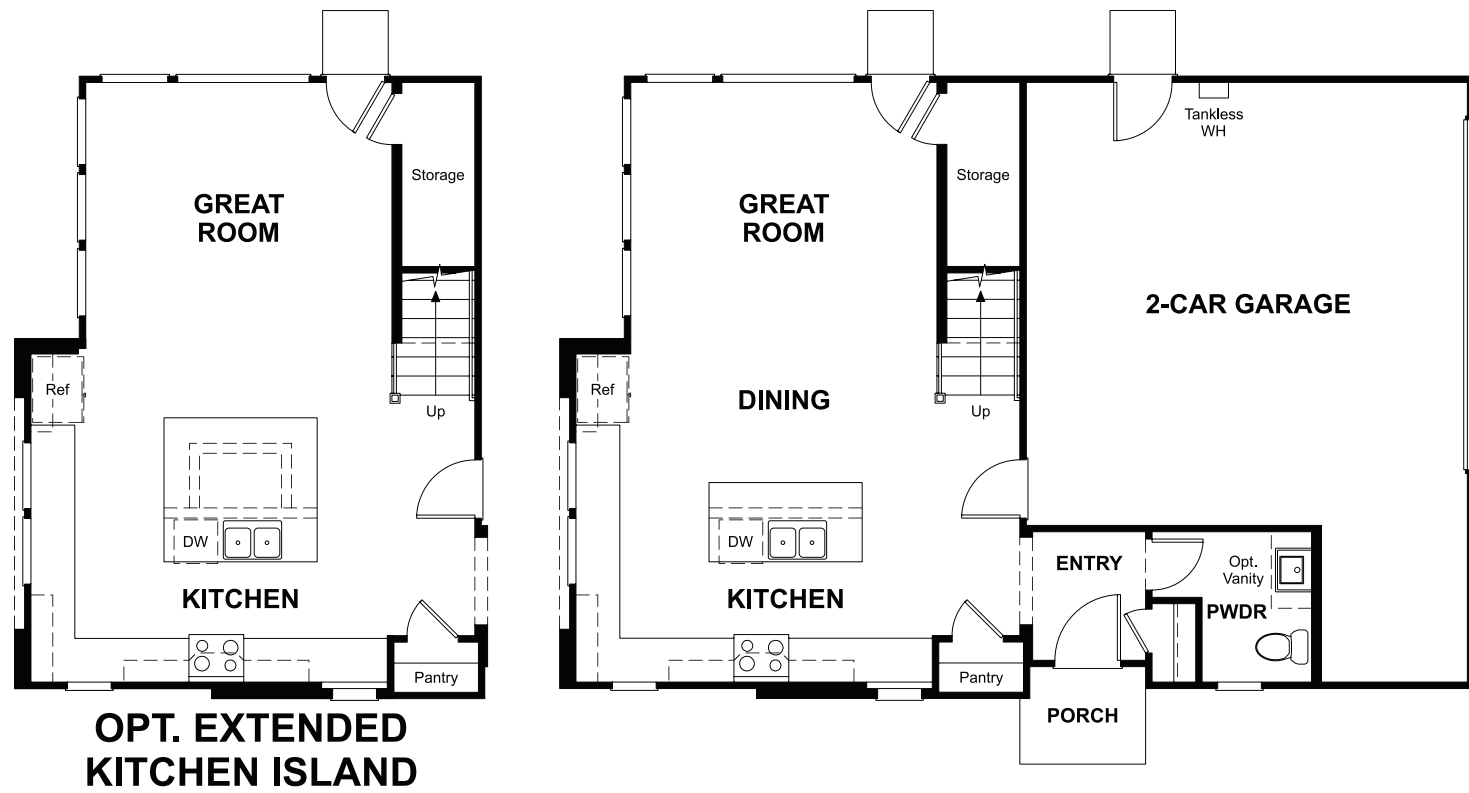
ELEVATION A



ELEVATION B

MAIN FLOOR

SECOND FLOOR



THIS PLAN'S PROJECTED  
**HERS® INDEX = 26\***  
 Projected rating based on plans – field confirmation required

**How does this floor plan rate?**  
 Take a look: **100** = standard new home™ **130** = typical resale home™  
 The lower the number, the better! Refer to the RESNET® HERS index brochure  
 or go to [RESNET.us](https://RESNET.us) and [HERSindex.com](https://HERSindex.com)

**What's a HERS® index?** HERS stands for Home Energy Rating System, a system created by RESNET® to measure home energy efficiency. ^  
 A projected HERS index or rating is a computer simulation performed prior to construction by a third-party HERS rater using RESNET-accredited rating software, rated feature and specification data derived from home plans, features and specifications, and other data selected or assumed by the rater. The projected HERS index is approximate and is subject to change without notice. Actual results will vary.



ELEVATION C

### ABOUT THE NAYLOR

The smartly designed Naylor plan offers two floors of comfortable living space. As you enter from the front porch, you'll find a generous kitchen with a center island and built-in pantry, which leads into an open dining area and great room—ideal for entertaining! The main floor also has a convenient powder room, under-stair storage and access to the 2-car garage. Upstairs, there's a centrally located laundry room, two inviting bedrooms and a shared bath with options for double sinks and a walk-in shower. The owner's suite occupies the rest of the second floor and includes a private bath with dual vanities, a walk-in shower and a spacious walk-in closet.

### COMMUNITY LOCATION:

Redmond at Valencia | 27105 White Sage Court | Valencia, CA 91381 | **661.705.6092**

### DESIGN CENTER LOCATION:

Southern California Home Gallery™ | 5171 California Avenue, Suite 110 | Irvine, CA 92617 | **800.852.9714**

\*This information is presented for educational purposes only. The HERS® index for a confirmed rating will be determined by a third-party HERS rater based on data gathered from on-site observations and, if required, testing of rated features for a home as featured, optioned, located, oriented and/or built.

\*\*Standard new home is based on the RESNET® Reference Home definition with a HERS index of 100 (based on the 2006 International Energy Conservation Code).

\*\*\*Typical resale home is based on the U.S. Department of Energy definition with a HERS index of 130.

^RESNET has developed the HERS index to indicate the comparative efficiencies of homes. It is no guarantee that energy efficiencies will be achieved.

Floor plans and renderings are conceptual drawings and may vary from actual plans and homes as built. Options and features may not be available on all homes and are subject to change without notice. Actual homes may vary from photos and/or drawings which show upgraded landscaping and may not represent the lowest-priced homes in the community. Features may include optional upgrades and may not be available on all homes. Prices, specifications and availability are subject to change without notice. ©2021 Richmond American Homes, Richmond American Homes of Maryland, Inc., California Department of Real Estate – Real Estate Broker, Corporation License Number 01842595. 12/08/2021

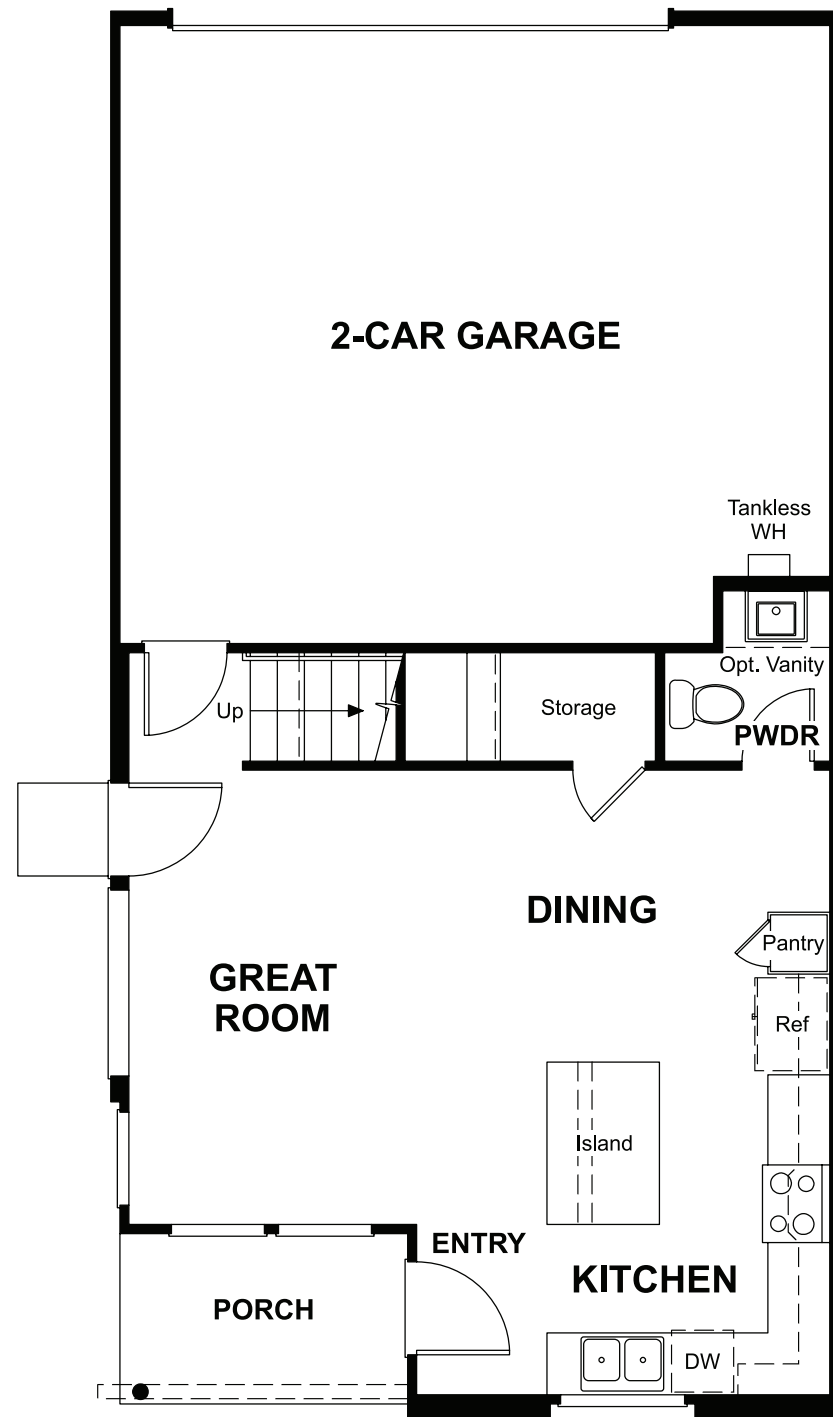


ELEVATION A

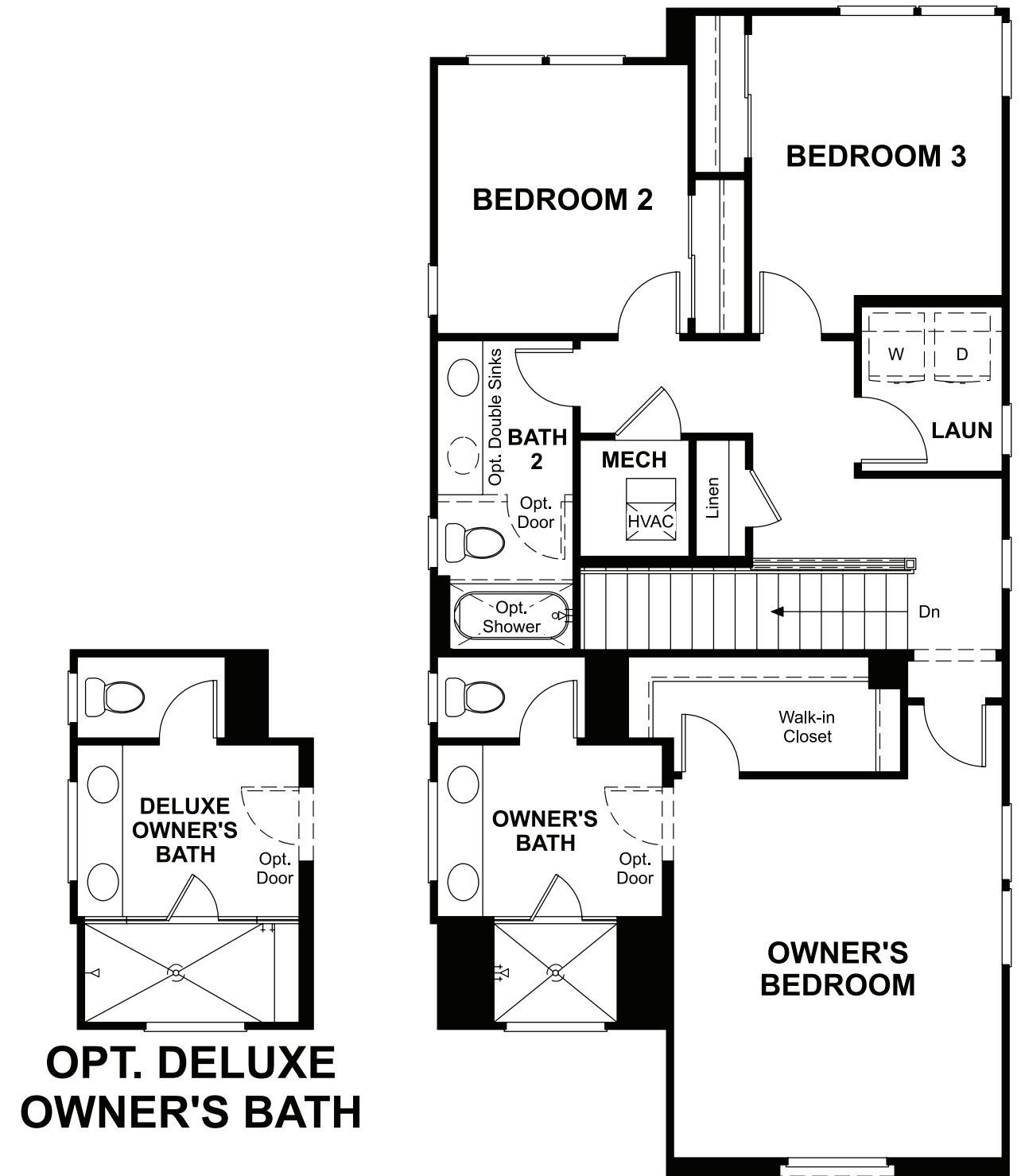


ELEVATION B

MAIN FLOOR



SECOND FLOOR



THIS PLAN'S PROJECTED  
**HERS® INDEX = 23\***  
Projected rating based on plans – field confirmation required

**How does this floor plan rate?**  
Take a look: **100** = standard new home™ **130** = typical resale home™  
The lower the number, the better! Refer to the RESNET® HERS index brochure or go to [RESNET.us](https://www.resnet.us) and [HERSindex.com](https://www.hersindex.com)

**What's a HERS® index?** HERS stands for Home Energy Rating System, a system created by RESNET® to measure home energy efficiency. ^  
A projected HERS index or rating is a computer simulation performed prior to construction by a third-party HERS rater using RESNET-accredited rating software, rated feature and specification data derived from home plans, features and specifications, and other data selected or assumed by the rater. The projected HERS index is approximate and is subject to change without notice. Actual results will vary.



ELEVATION C

**ABOUT THE NEVETT**

The three-story Nevett plan is a great choice for those who would like a workspace that’s separated from the other areas of the home for added peace and privacy. The ground floor consists of a 2-car garage, an entry with walk-in storage and a study that would make an ideal home office. Upstairs, you’ll find an open great room with access to a deck and a kitchen with a center island and walk-in pantry. A bedroom with a walk-in closet, a full bath and a laundry room complete the floor. The owner’s suite is located on the top floor and includes a private bath with dual sinks, a walk-in shower and a walk-in closet. An additional bedroom on this floor also offers an attached bath and walk-in closet. Enjoy your morning coffee or an evening chat on the third-floor deck!

**COMMUNITY LOCATION:**

Redmond at Valencia | 27105 White Sage Court | Valencia, CA 91381 | **661.705.6092**

**DESIGN CENTER LOCATION:**

Southern California Home Gallery™ | 5171 California Avenue, Suite 110 | Irvine, CA 92617 | **800.852.9714**

\*This information is presented for educational purposes only. The HERS® index for a confirmed rating will be determined by a third-party HERS rater based on data gathered from on-site observations and, if required, testing of rated features for a home as featured, optioned, located, oriented and/or built.

\*\*Standard new home is based on the RESNET® Reference Home definition with a HERS index of 100 (based on the 2006 International Energy Conservation Code).

\*\*\*Typical resale home is based on the U.S. Department of Energy definition with a HERS index of 130.

^RESNET has developed the HERS index to indicate the comparative efficiencies of homes. It is no guarantee that energy efficiencies will be achieved.

Floor plans and renderings are conceptual drawings and may vary from actual plans and homes as built. Options and features may not be available on all homes and are subject to change without notice. Actual homes may vary from photos and/or drawings which show upgraded landscaping and may not represent the lowest-priced homes in the community. Features may include optional upgrades and may not be available on all homes. Prices, specifications and availability are subject to change without notice. Square footage is approximate and subject to change without notice. ©2021 Richmond American Homes, Richmond American Homes of Maryland, Inc., California Department of Real Estate – Real Estate Broker, Corporation License Number 01842595. 12/08/2021



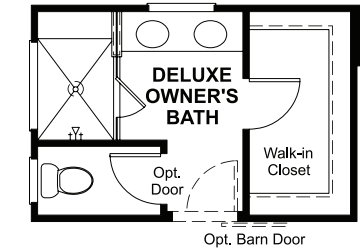
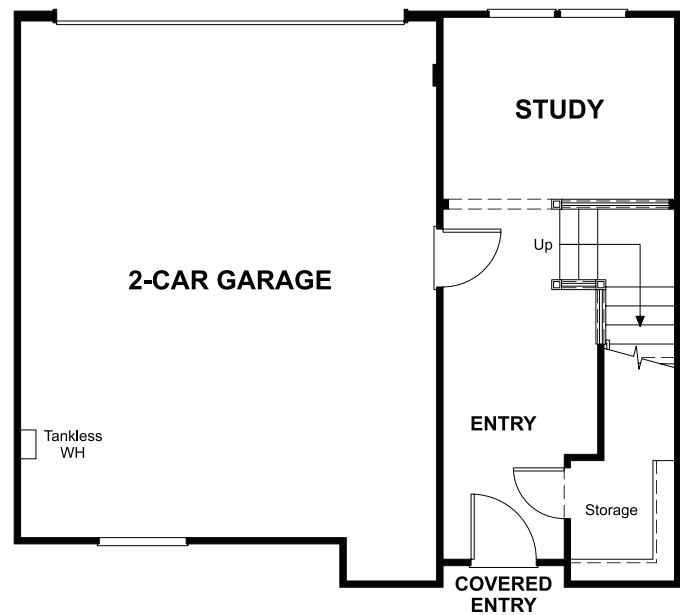
ELEVATION A



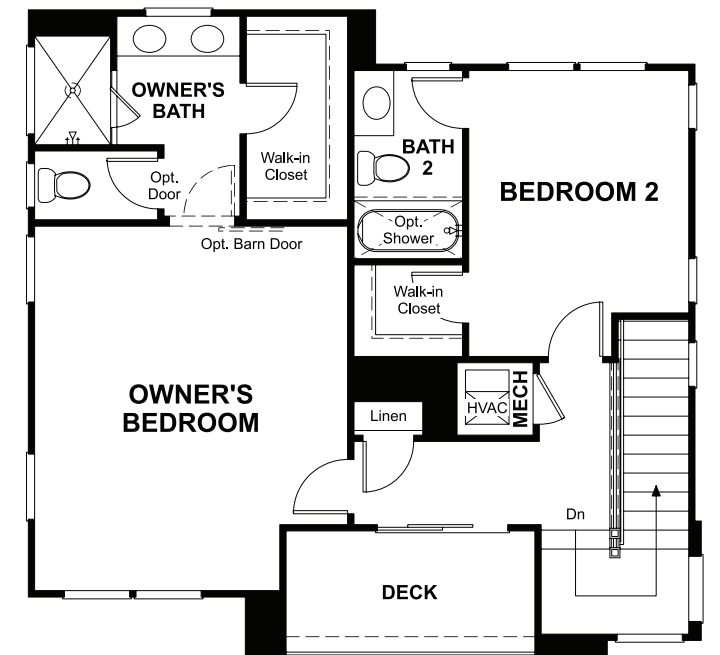
ELEVATION B

MAIN FLOOR

SECOND & THIRD FLOORS



OPT. DELUXE OWNER'S BATH



THIS PLAN'S PROJECTED  
**HERS® INDEX = 24\***  
Projected rating based on plans – field confirmation required

**How does this floor plan rate?**  
Take a look: **100** = standard new home™ **130** = typical resale home™  
The lower the number, the better! Refer to the RESNET® HERS index brochure or go to [RESNET.us](https://www.resnet.us) and [HERSindex.com](https://www.hersindex.com)

**What's a HERS® index?** HERS stands for Home Energy Rating System, a system created by RESNET® to measure home energy efficiency. ^  
A projected HERS index or rating is a computer simulation performed prior to construction by a third-party HERS rater using RESNET-accredited rating software, rated feature and specification data derived from home plans, features and specifications, and other data selected or assumed by the rater. The projected HERS index is approximate and is subject to change without notice. Actual results will vary.



ELEVATION C

### ABOUT THE NORTON

The Norton plan greets guests with an expansive great room, which flows into the home’s dining area and kitchen. The airy space is interrupted only by the convenient kitchen island. Toward the back of the home, you’ll find a mudroom, which provides access to the garage, the stairs, a full bath and a main-floor bedroom with walk-in closet. On the second floor, you’ll find a spacious owner’s suite with an immense walk-in closet and a private bath with dual vanities and a walk-in shower. The rest of the floor offers a laundry room with optional cabinets and sink, a secondary bathroom and two inviting bedrooms—one with a walk-in closet!

### COMMUNITY LOCATION:

Redmond at Valencia | 27105 White Sage Court | Valencia, CA 91381 | **661.705.6092**

### DESIGN CENTER LOCATION:

Southern California Home Gallery™ | 5171 California Avenue, Suite 110 | Irvine, CA 92617 | **800.852.9714**

\*This information is presented for educational purposes only. The HERS® index for a confirmed rating will be determined by a third-party HERS rater based on data gathered from on-site observations and, if required, testing of rated features for a home as featured, optioned, located, oriented and/or built.

\*\*Standard new home is based on the RESNET® Reference Home definition with a HERS index of 100 (based on the 2006 International Energy Conservation Code).

\*\*\*Typical resale home is based on the U.S. Department of Energy definition with a HERS index of 130.

^RESNET has developed the HERS index to indicate the comparative efficiencies of homes. It is no guarantee that energy efficiencies will be achieved.

Floor plans and renderings are conceptual drawings and may vary from actual plans and homes as built. Options and features may not be available on all homes and are subject to change without notice. Actual homes may vary from photos and/or drawings which show upgraded landscaping and may not represent the lowest-priced homes in the community. Features may include optional upgrades and may not be available on all homes. Prices, specifications and availability are subject to change without notice. Square footage is approximate and subject to change without notice. ©2021 Richmond American Homes, Richmond American Homes of Maryland, Inc., California Department of Real Estate – Real Estate Broker, Corporation License Number 01842595. 12/08/2021



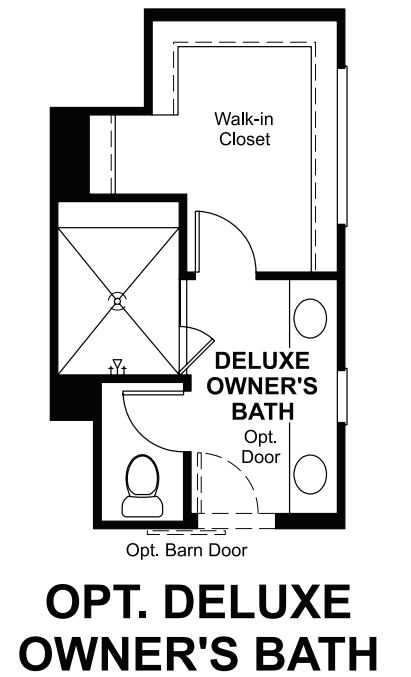
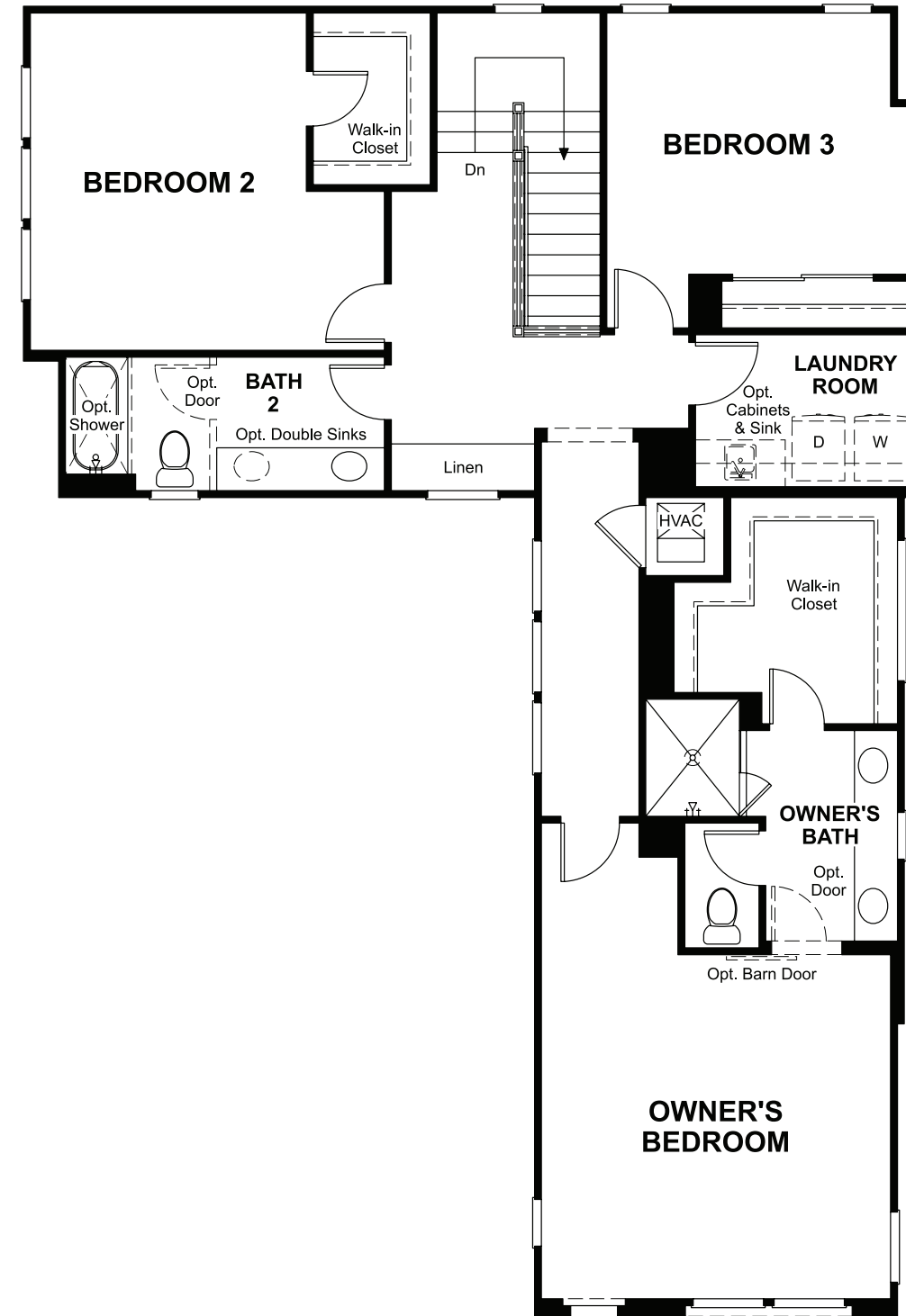
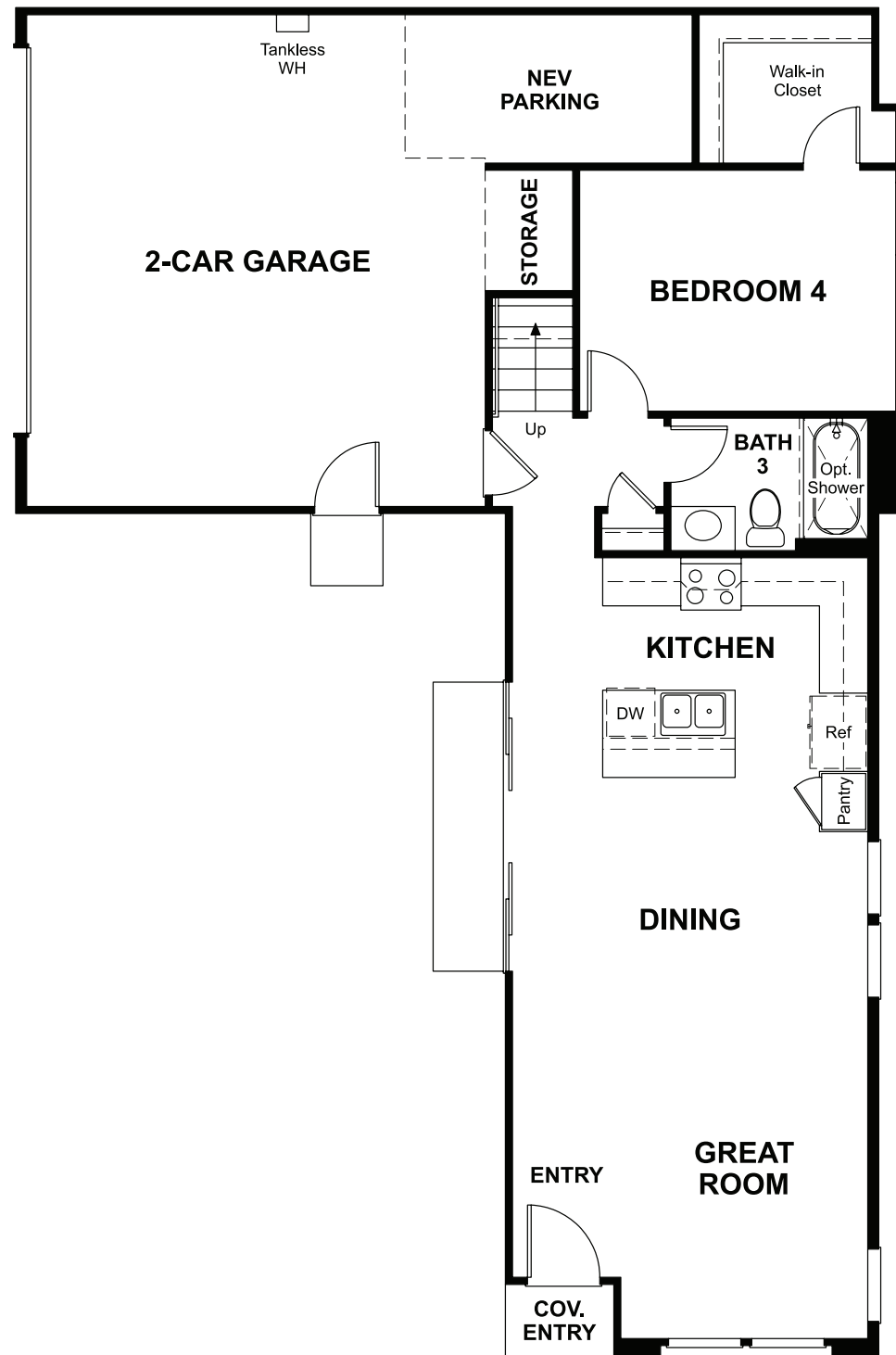
ELEVATION A



ELEVATION B

MAIN FLOOR

SECOND FLOOR



THIS PLAN'S PROJECTED  
**HERS® INDEX = 24\***  
Projected rating based on plans – field confirmation required

**How does this floor plan rate?**  
Take a look: **100** = standard new home™ **130** = typical resale home™  
The lower the number, the better! Refer to the RESNET® HERS index brochure or go to [RESNET.us](http://RESNET.us) and [HERSindex.com](http://HERSindex.com)

**What's a HERS® index?** HERS stands for Home Energy Rating System, a system created by RESNET® to measure home energy efficiency. ^  
A projected HERS index or rating is a computer simulation performed prior to construction by a third-party HERS rater using RESNET-accredited rating software, rated feature and specification data derived from home plans, features and specifications, and other data selected or assumed by the rater. The projected HERS index is approximate and is subject to change without notice. Actual results will vary.